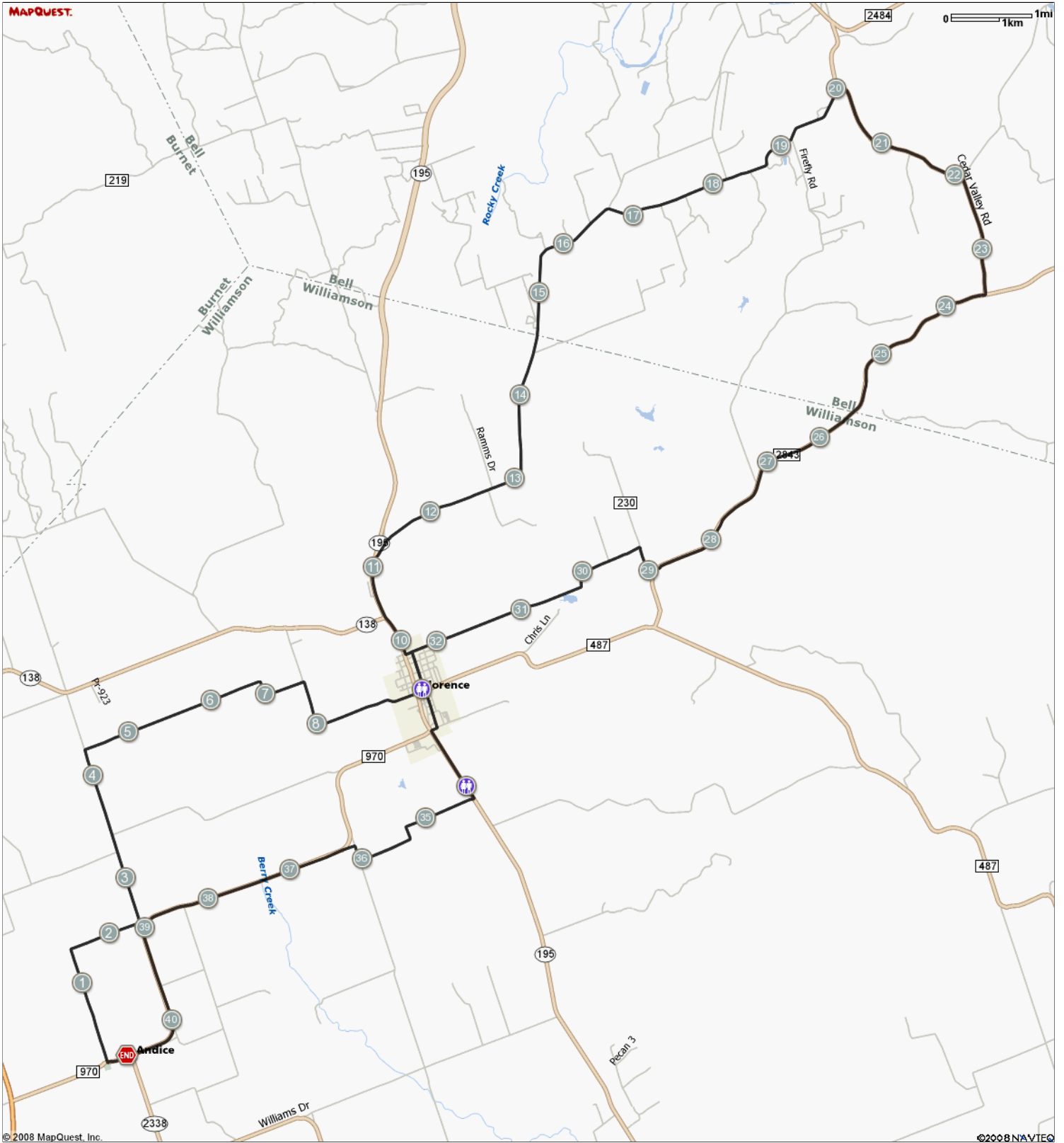


ROUTE DESCRIPTION:
No Description Provided



ROUTE DESCRIPTION:
 No Description Provided

Notes		
AT	FOR	NOTES
0.26 mi.		11,877 ft. Turn right at Highway 215
2.51 mi.		10,862 ft. Turn left at Highway 223
4.57 mi.		15,469 ft. Turn right at Highway 220
7.5 mi.		7,738 ft. Turn right at Highway 226
8.96 mi.		2,269 ft. Continue on W Main St
9.39 mi.		77 ft. Bathroom
9.4 mi.		2,446 ft. Turn left at College Ave
9.87 mi.		446 ft. Turn left at E Tomlinson St
9.95 mi.		6,347 ft. Turn right at TX-195
11.15 mi.		1,004 ft. Turn right at Spur 440
11.34 mi.		18,189 ft. Slight right at Highway 228
14.79 mi.		28,258 ft. Continue on Stillman Valley Rd
20.14 mi.		10,517 ft. Turn right at Cedar Valley Rd
22.13 mi.		7,365 ft. Turn right to stay on Cedar Valley Rd
23.53 mi.		28,262 ft. Turn right at 2843
28.88 mi.		754 ft. Turn right to stay on 2843/3189

Notes		
AT	FOR	NOTES
29.02 mi.		1,531 ft. Turn right at Highway 230
29.31 mi.		4,036 ft. Turn left at Highway 229
30.08 mi.		10,933 ft. Turn left to stay on Highway 229
32.15 mi.		1,558 ft. Continue on Tomlinson St
32.44 mi.		2,446 ft. Turn left at College Ave
32.91 mi.		55 ft. Turn left at 487/ E Main St
32.92 mi.		2,342 ft. Turn right at Story Ave
33.36 mi.		453 ft. Turn right at South St
33.45 mi.		4,173 ft. Turn left at S Patterson Ave/ TX-195 Continue to follow TX-195
34.24 mi.		754 ft. Bathroom
34.38 mi.		8,966 ft. Turn right at Highway 244
36.08 mi.		941 ft. Turn right at Highway 245
36.26 mi.		733 ft. Turn left toward 970
36.4 mi.		23,648 ft. Slight left at 970
40.87 mi.		- Stop